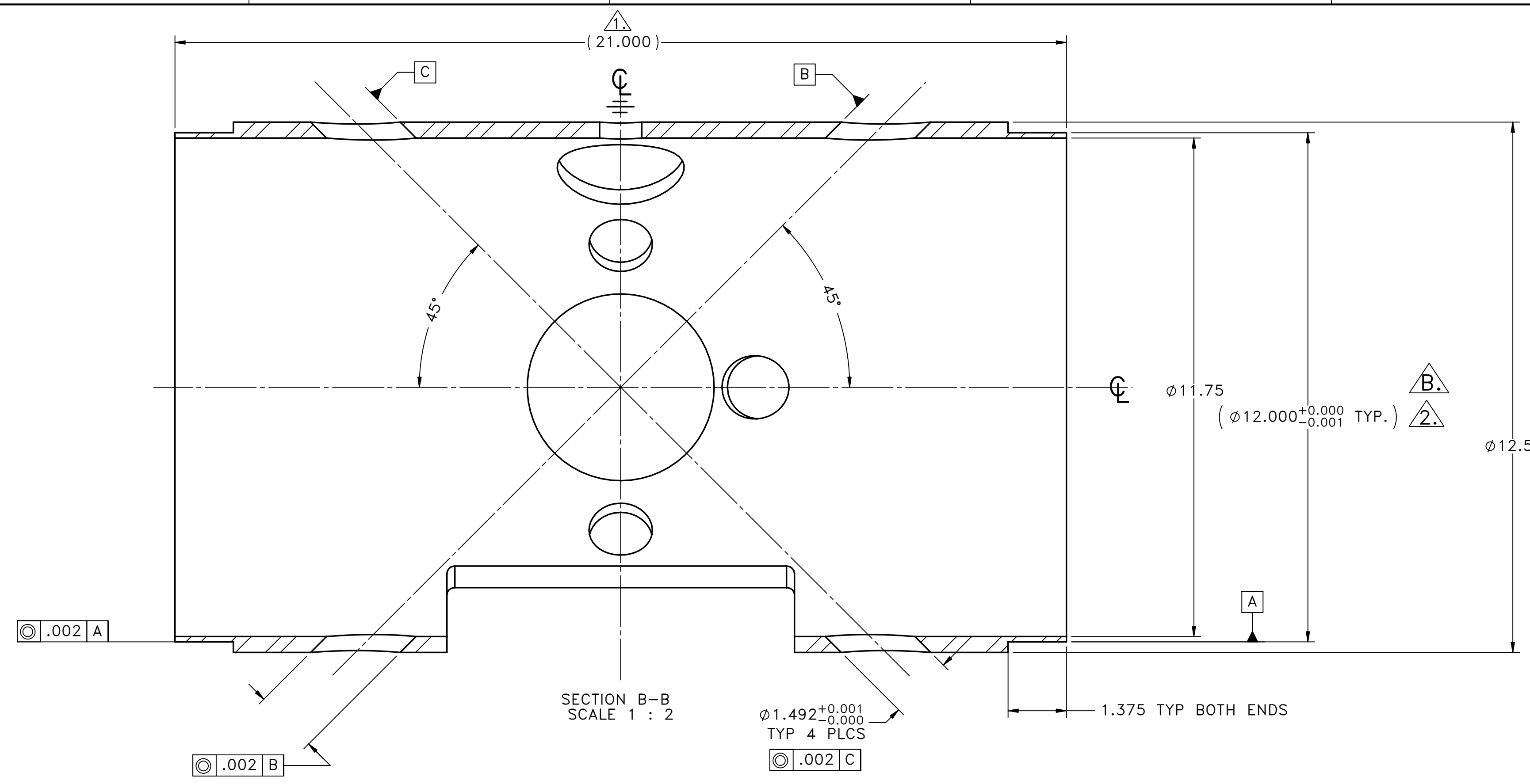
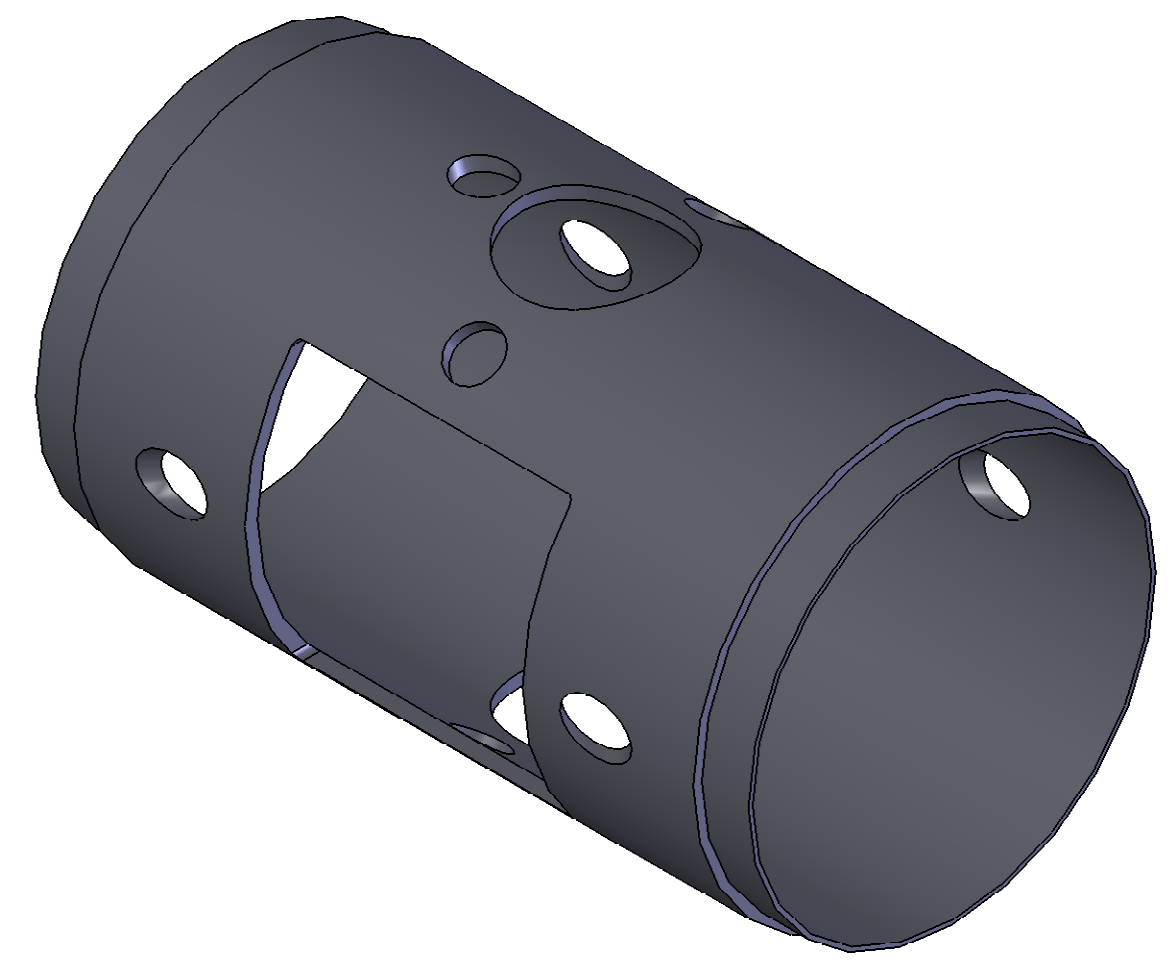
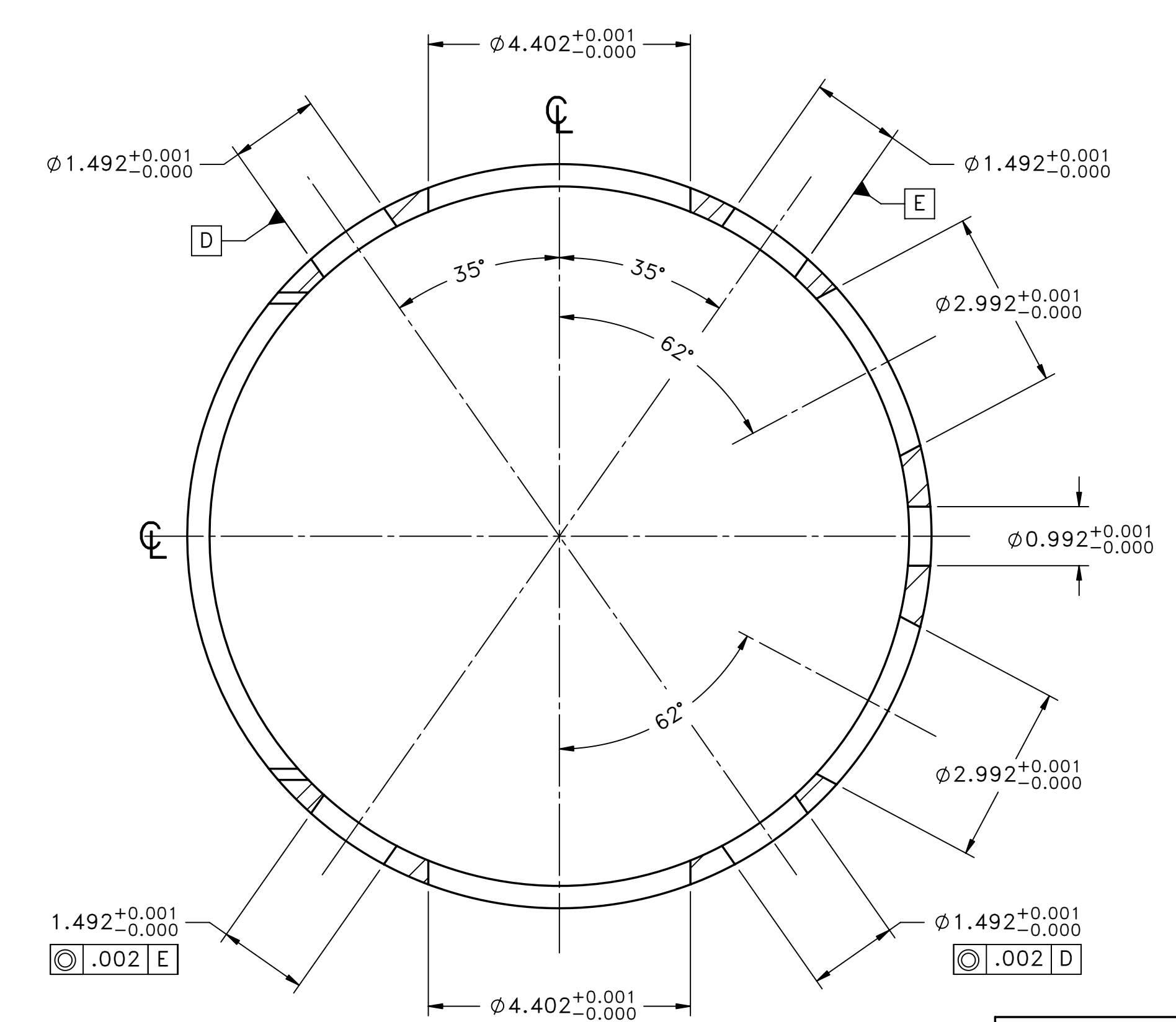
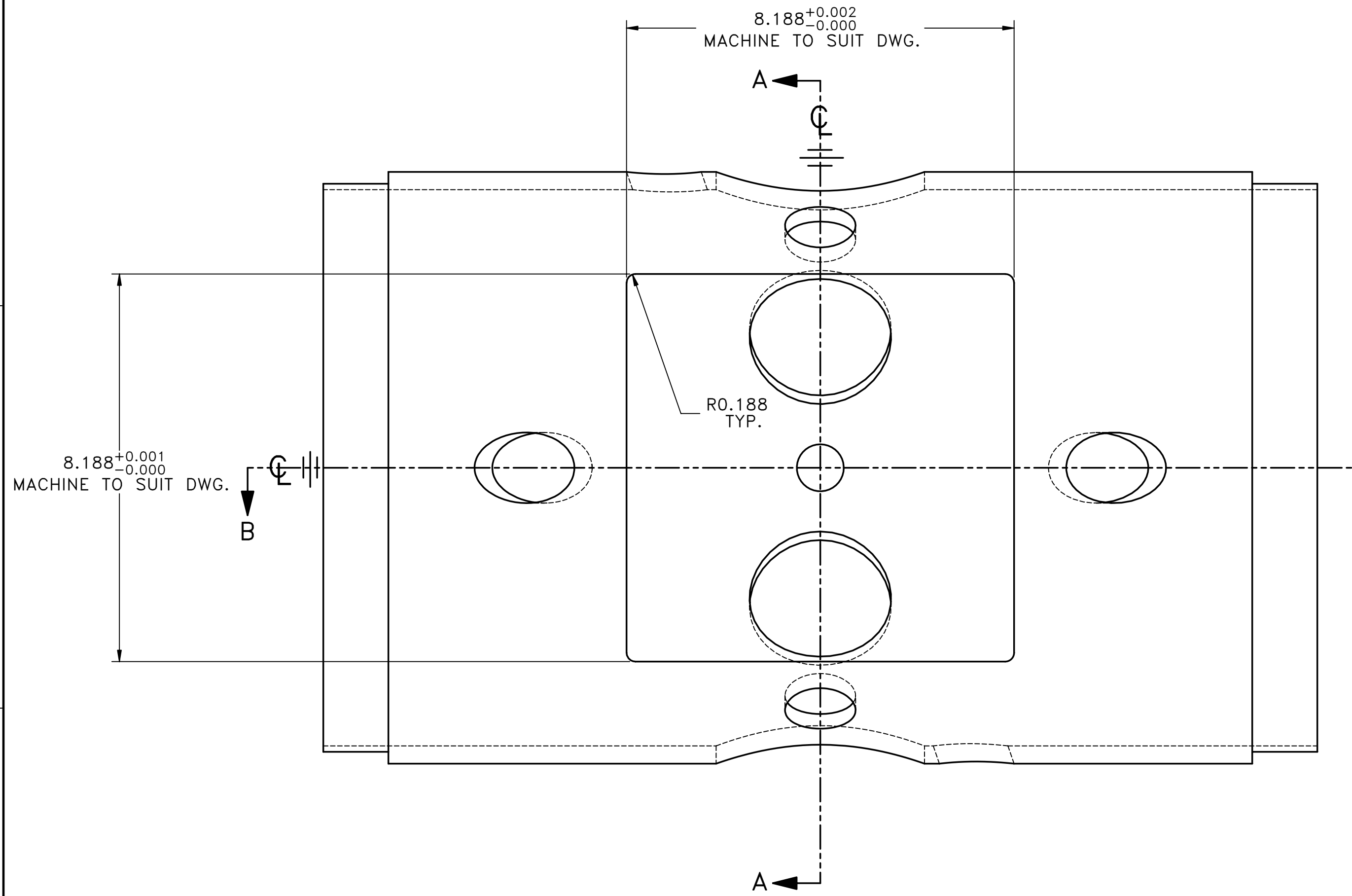


ITEM	DESCRIPTION	MATERIAL	QTY.
1	12.50 DIA x 21.00	S.S.316	1

DIMENSIONS QUOTED ARE FINISHED DIMENSIONS, NO ALLOWANCE HAS BEEN MADE FOR MANUFACTURE.



NOTE:
 1. TOP VIEW IS ILLUSTRATED ON SHEET 2
 2. ALLOW EXTRA MATERIAL LENGTH FOR ASSEMBLY DWG. ILE2314D
 3. DIMMENSION IS FOR REFERENCE ONLY. ACTUAL DIMMENSION WILL BE DETERMINED FROM MATED 14" CF FLANGE TO ENSURE A MAXIMUM CLEARANCE OF 0.003.



REMOVE ALL BURRS AND SHARP EDGES

TOLERANCES UNLESS OTHERWISE SPECIFIED
DECIMALS .X ± 0.1
.XX ± 0.01
.XXX ± 0.005
ANGULAR ± 1.0°
SURFACE FINISH 125 μ inch

REV	DATE	ZONE	REVISION DESCRIPTION	APPROVED
B	5/28/2010		ECO-2167 - Addition of note #3	A.G.
A	5/13/2010		ECO-2165 - Change control applies.	A.G.



DO NOT COPY, THIS DOCUMENT CONTAINS PROPRIETARY INFORMATION
 THIS DRAWING, SUBJECT MATTER AND INFORMATION CONTAINED THEREIN, IS THE SOLE, EXCLUSIVE AND CONFIDENTIAL PROPERTY OF TRIUMF LABORATORY, AND AS SUCH, SHALL NOT BE DISCLOSED, COPIED, REPRODUCED OR USED, IN WHOLE OR IN PART, WITHOUT EXPRESSED WRITTEN PERMISSION OF THE TRIUMF LABORATORY OR ITS REPRESENTATIVES.

DESIGNED A.G.	SUB-ASSY: ILE2314D
DRAWN Daniel Rowbotham	ASSEMBLY: ILE2313D
CHECKED A.G.	
REA # 1030	
TRACKING #	

CHAMBER BODY WELD ASSEMBLY TUBES TO CHAMBER TEXAS AM/TRINAT CHAMBER	
SCALE 1:2	DWG NO. ILE2315
DATE 04-28-10	SIZE SHEET 1 OF 2

