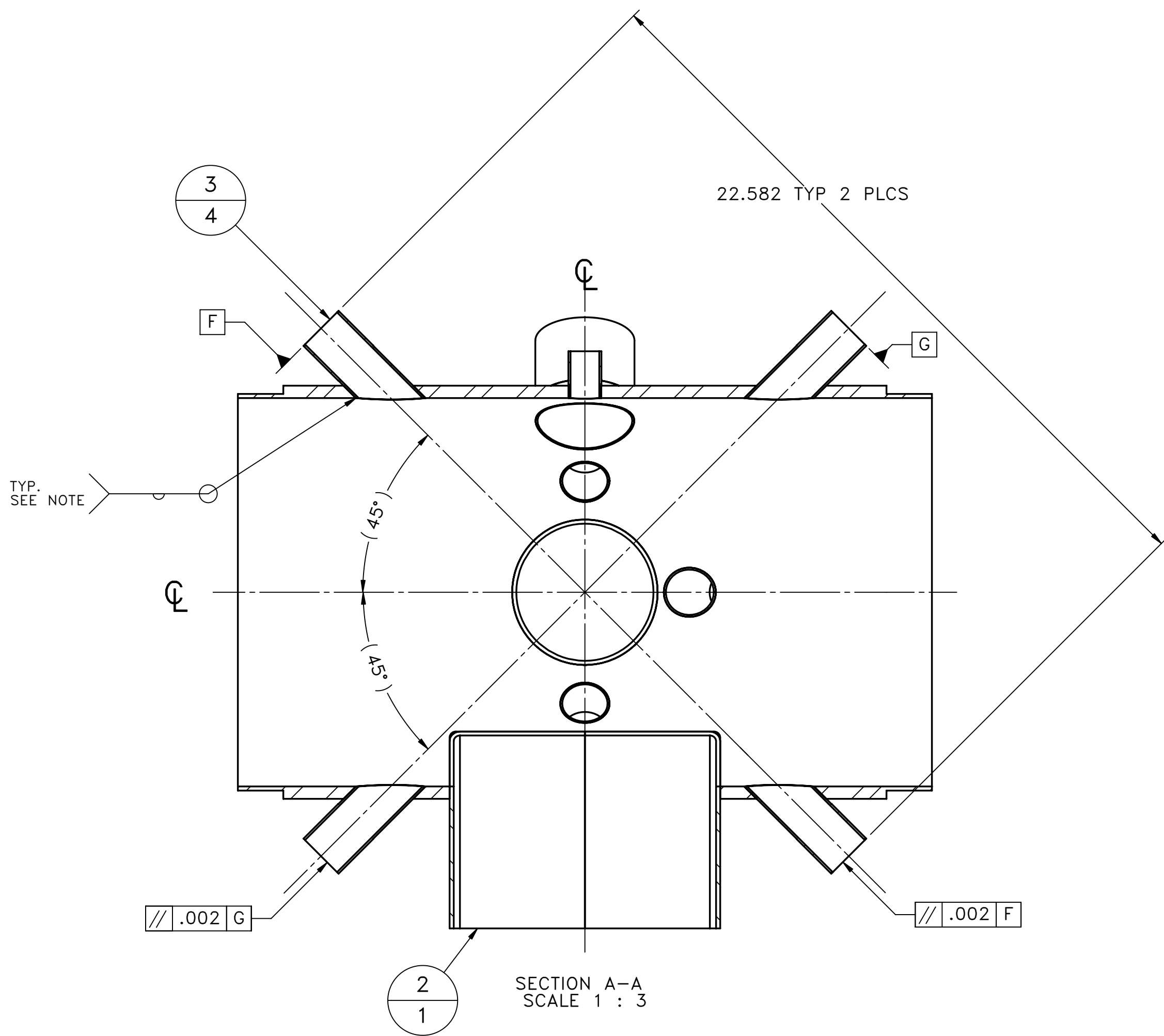
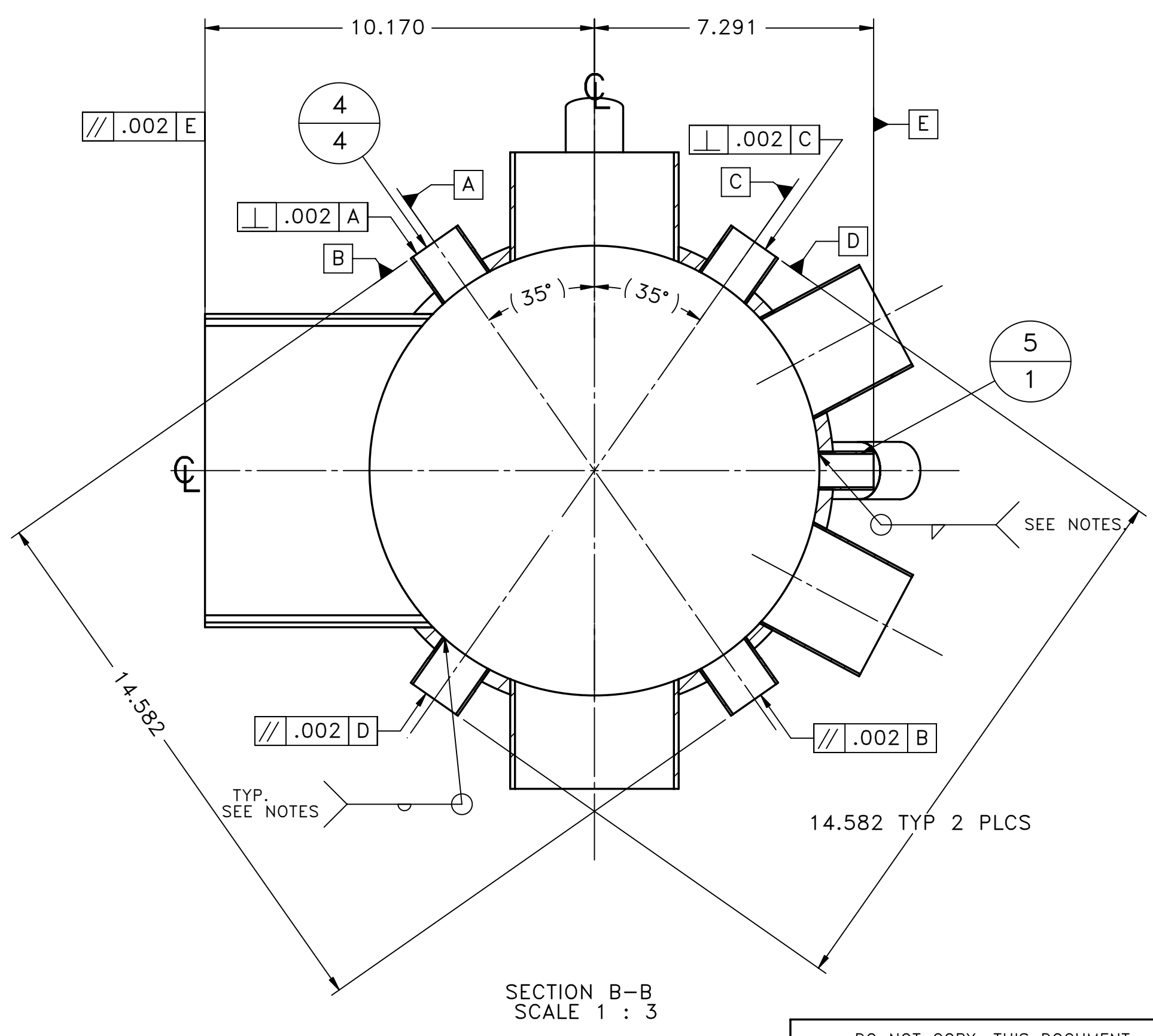
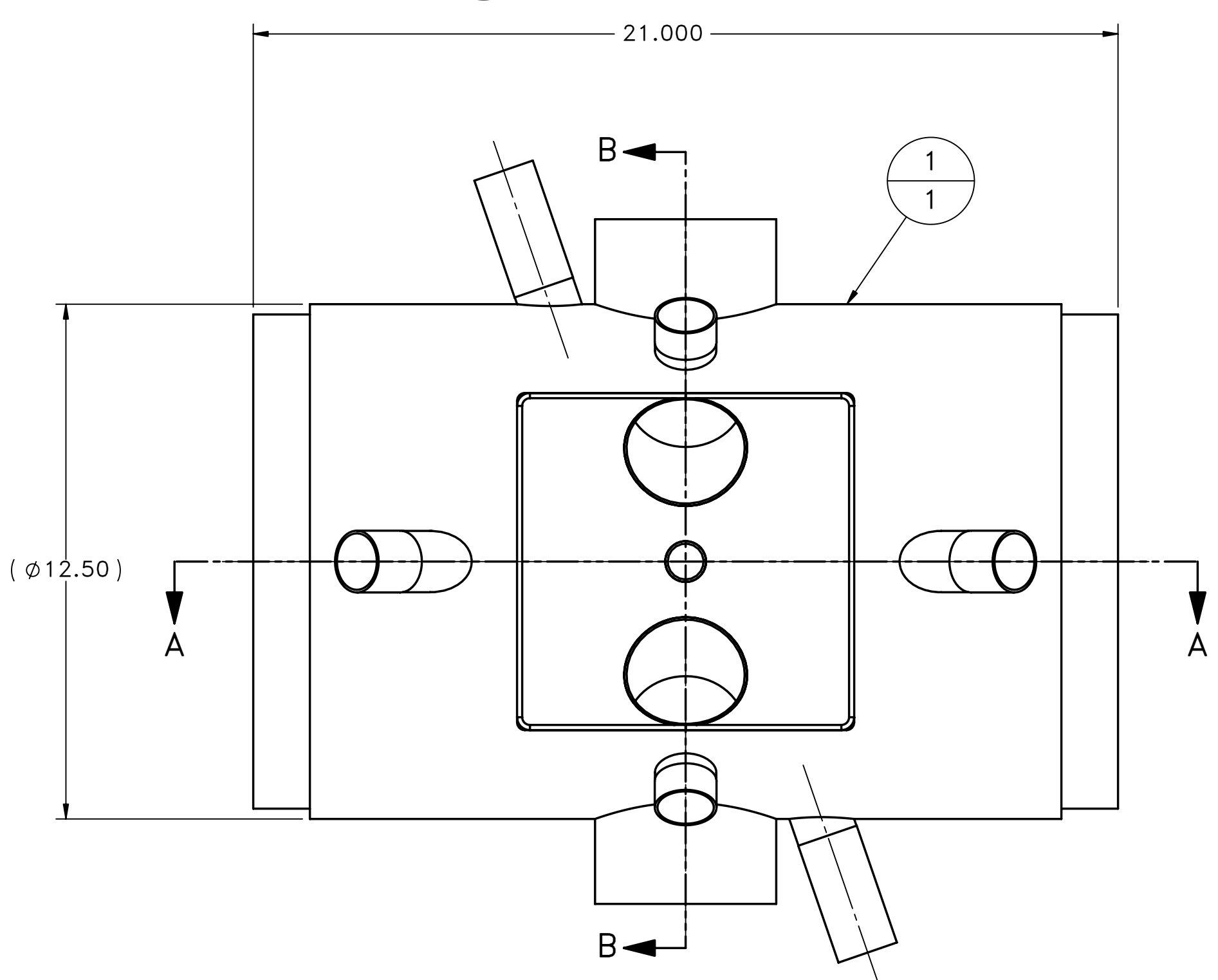
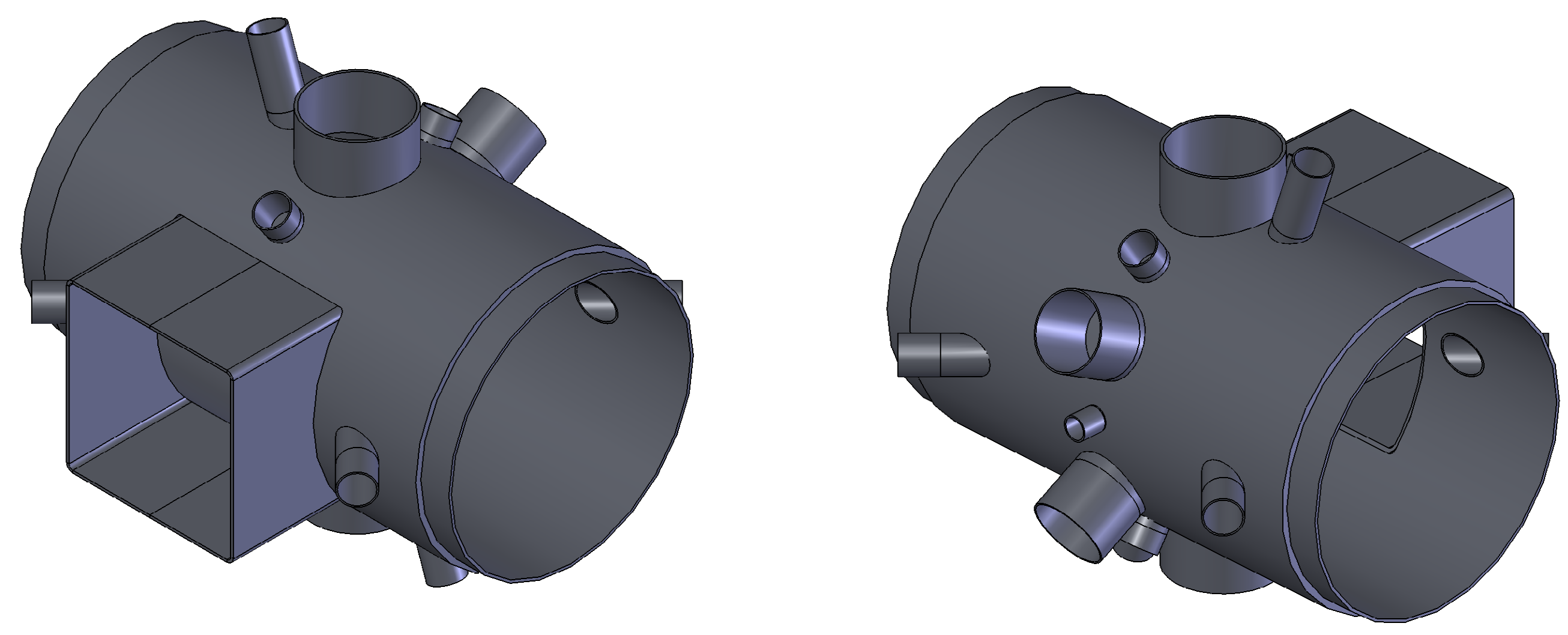


ITEM	REF No.	DESCRIPTION	MATERIAL	QTY.
1	ILE2315	CHAMBER BODY	S.S.316	1
2	ILE2316	PORT A	S.S.316	1
3	ILE2318	TUBE - PORT B	S.S.316	4
4	ILE2319	TUBE - PORT C	S.S.316	4
5	ILE2320	TUBE - PORT D	S.S.316	1
6	ILE2321	TUBE - PORT E	S.S.316	2
7	ILE2322	TUBE - PORT F	S.S.316	2
8	ILE2323	TUBE - PORT G	S.S.316	2



TOP VIEW ILLUSTRATED ON SHEET 2



- NOTES:
1. WELDS TO BE AUTOGENOUS
 2. WELDS MUST BE INTERNAL AND LEAK CHECKED
 3. ANY LEAKS IN EXCESS OF 1.0×10^{-10} TORR-LITRE/SEC MUST BE REPAIRED.
 4. MACHINE ALL PIPE ENDS AFTER WELDING PROCEDURE.
 5. SEE DWG. ILE313D FOR MANUFACTURING PROCESS.

REV	DATE	ZONE	REVISION DESCRIPTION	APPROVED
A	5/13/2010		ECO-2165 - Change control applies.	A.G.

REMOVE ALL BURRS AND SHARP EDGES

TRIUMF
4004 WESBROOK MALL
VANCOUVER, BRITISH COLUMBIA
CANADA V6T-2A3

CANADA'S NATIONAL LABORATORY FOR PARTICLE AND NUCLEAR PHYSICS

DESIGNED A.M.
DRAWN Daniel Rowbotham
CHECKED A.M.
REA # 1030
TRACKING #

DO NOT COPY, THIS DOCUMENT CONTAINS PROPRIETARY INFORMATION

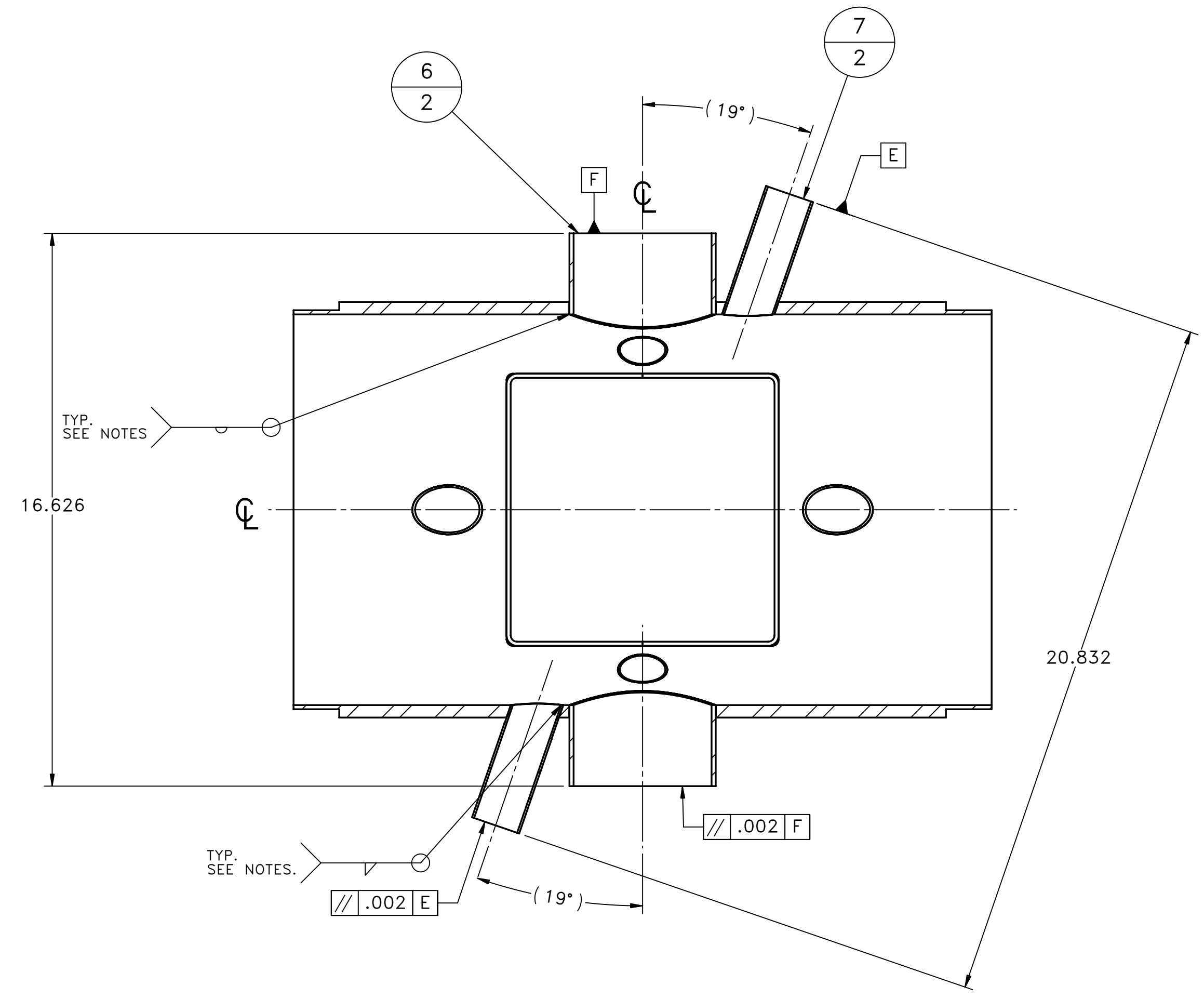
THIS DRAWING, SUBJECT MATTER AND INFORMATION CONTAINED THEREIN, IS THE SOLE, EXCLUSIVE AND CONFIDENTIAL PROPERTY OF TRIUMF LABORATORY, AND AS SUCH, SHALL NOT BE DISCLOSED, COPIED, REPRODUCED OR USED, IN WHOLE OR IN PART, WITHOUT EXPRESSED WRITTEN PERMISSION OF THE TRIUMF LABORATORY OR ITS REPRESENTATIVES.

ASSEMBLY: ILE2315D

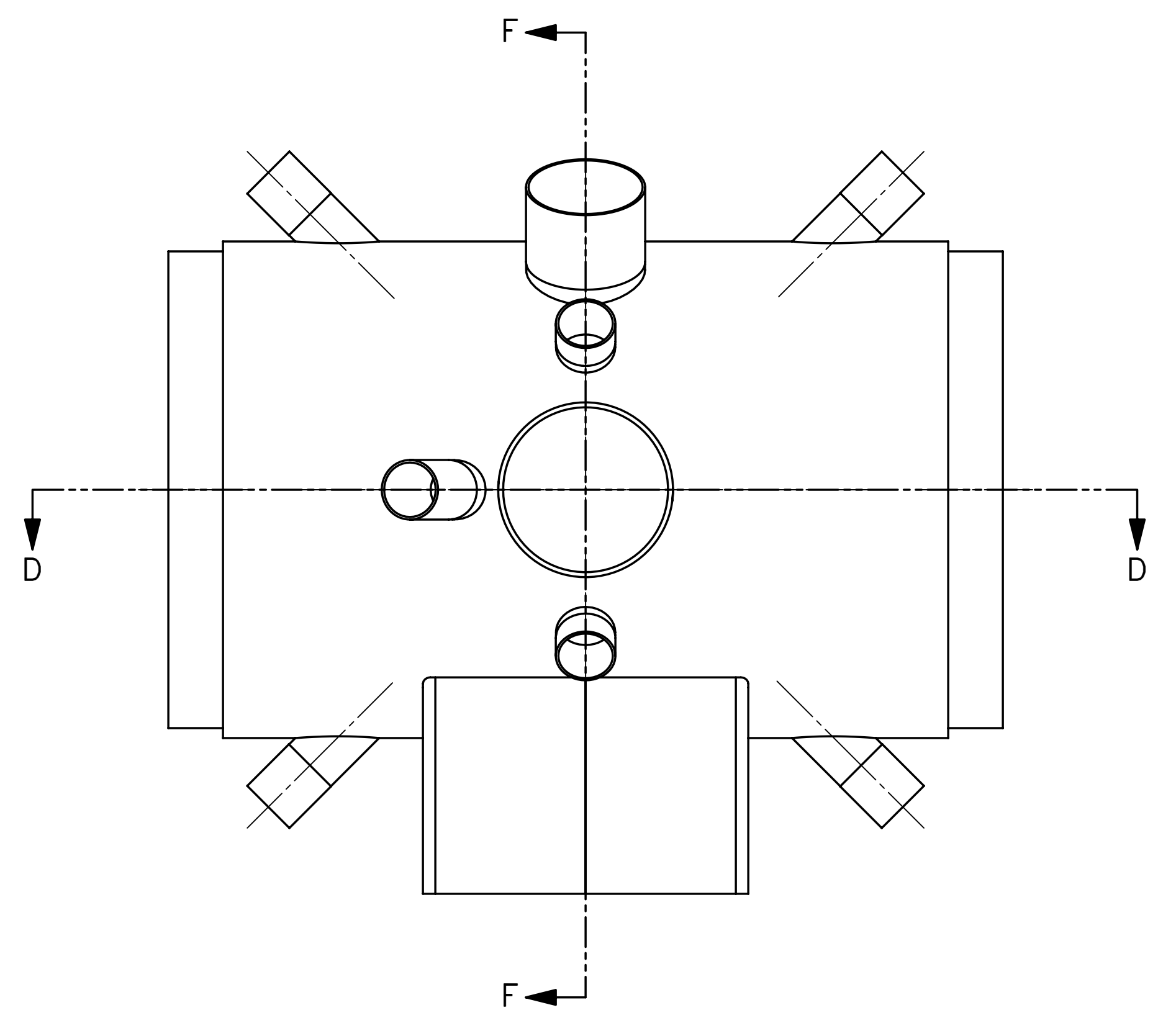
SCALE 1:3
DATE 03-05-10

WELD ASSEMBLY TUBES TO CHAMBER
TEXAS AM/TRINAT CHAMBER
LEBT

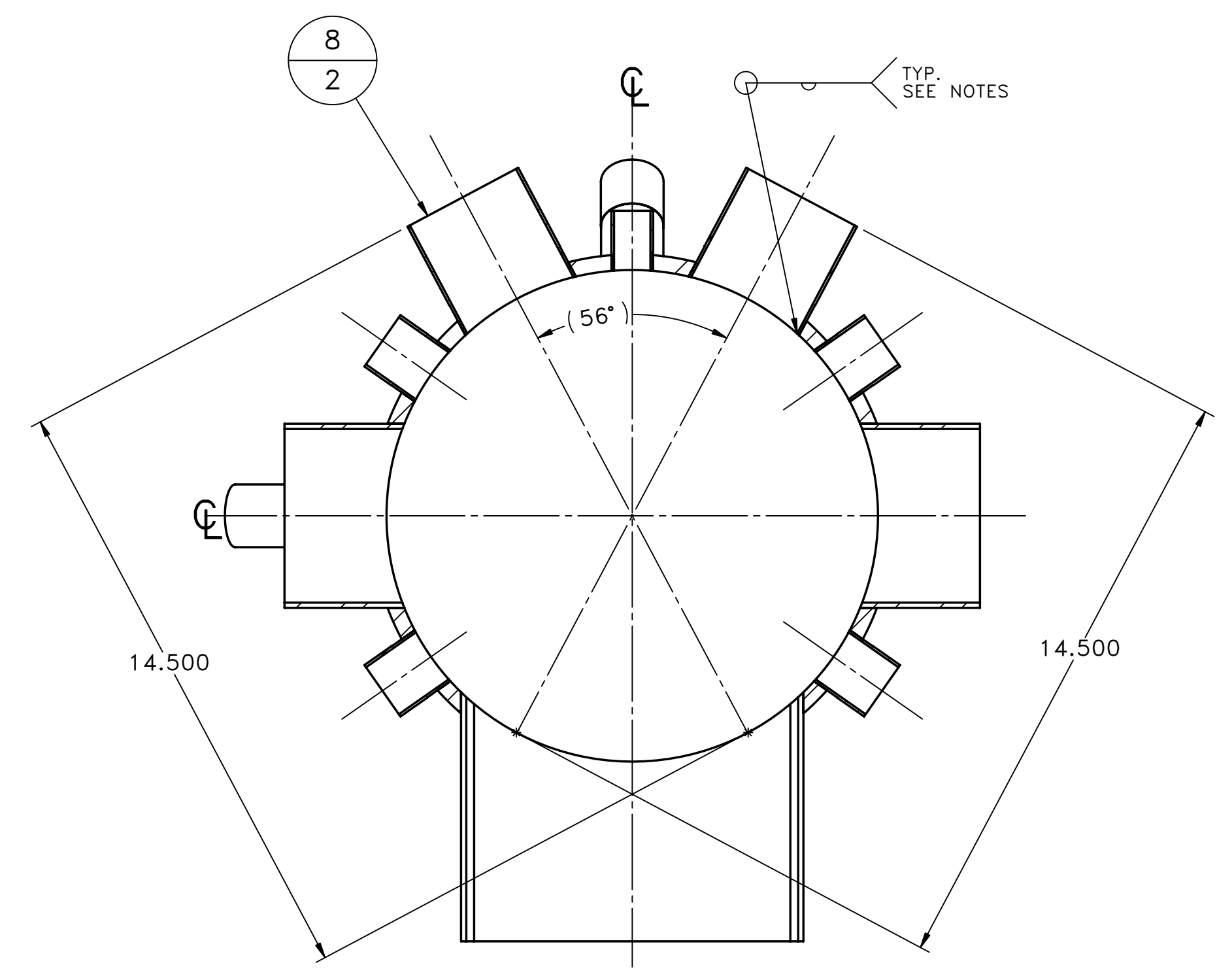
DWG NO. ILE2314
SIZE D
SHEET 1 OF 2
REV A



SECTION D-D
SCALE 1 : 3



TOP VIEW



SECTION F-F
SCALE 1 : 3