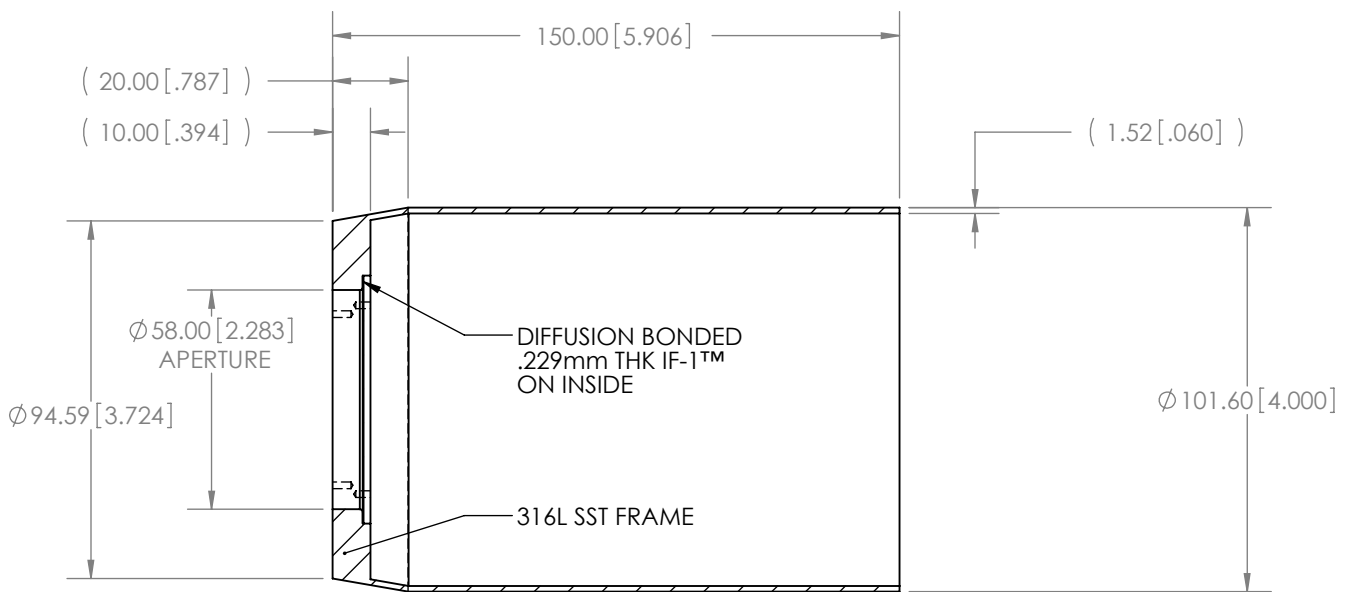
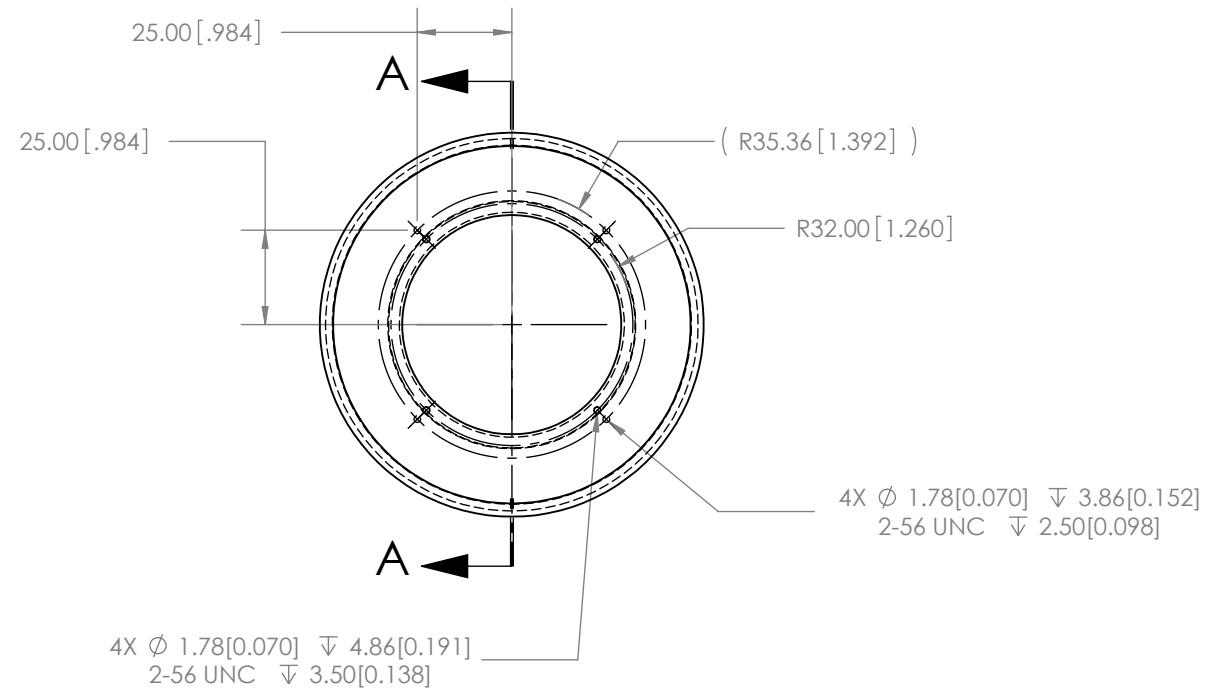
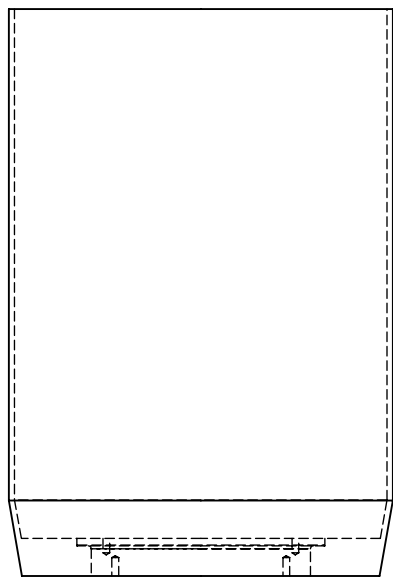


REVISIONS		DATE	APPROVED
ZONE	REV.	DESCRIPTION	
.	.	.	.
.	.	.	.
.	.	.	.



SECTION A-A

- NOTES:
- 1) Assembly to vacuum leak tight to 1×10^{-9} atm cc/sec of Helium.
 - 2) All sharp edges to be deburred to R.127mm[.005"] max.
 - 3) All dimensions are inspected prior to diffusion bonding unless stated otherwise.

Customer Approval:

(signature) (date)

INTERPRET DRAWING PER ANSI Y14.5 M-1994.

UNLESS OTHERWISE SPECIFIED DIMENSIONS ARE IN mm[INCHES]

ANGLES	±0.5
.X	±0.8
.XX	±0.13

FINISH (Ra): 1.6

BW-ELECTROFUSION PROPRIETARY
INFORMATION INCLUDED IN THIS DOCUMENT NOT TO BE DISSEMINATED WITHOUT PRIOR WRITTEN AUTHORIZATION.

NAME	DATE
S. YANG	2/22/11

DRAWN: S. YANG
ENG APPR.:
CUSTOMER: TEXAS A&M
MATERIAL: 316L SST/Be

BRUSHWELLMAN
Electrofusion Products

TITLE:
DB ASM, Ø101.6 mm OD
Ø58mm AP, .229mm THK IF-1

SIZE	DWG. NO.	REV
B	50038	-

SCALE: 1:2 DO NOT SCALE DRAWING SHEET 1 OF 1